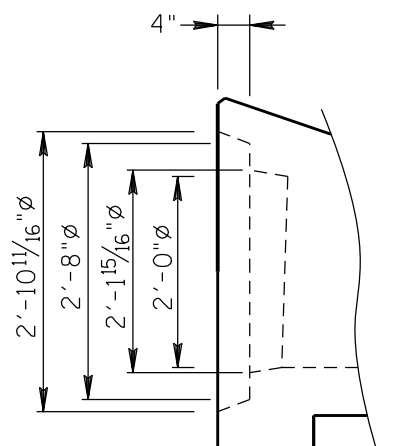
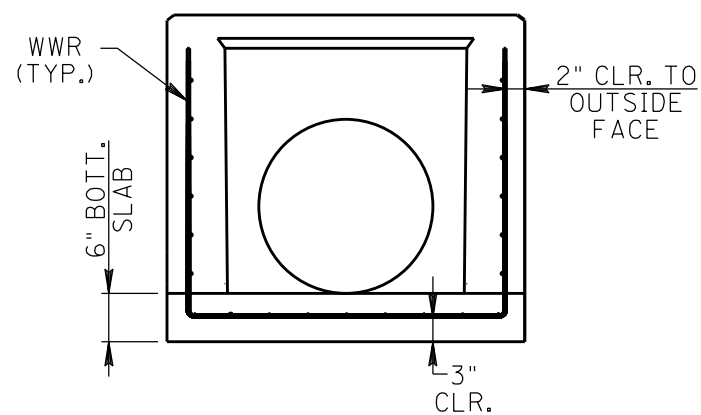


ISOMETRIC VIEW
SHOWING DIMENSIONS, 6:1 SLOPE



END SECTION
SHOWING STEPPED
OPENING DIAMETERS



WALL SECTION
SHOWING CLEARANCES TO WELDED
WIRE REINFORCEMENT (WWR)

GENERAL NOTES

1. SPECIFICATIONS: TDOT 2015 EDITION WITH CURRENT ADDENDA.
2. DESIGN SPECIFICATIONS: AASHTO LRFD SPECIFICATIONS, CURRENT EDITION.
3. CONCRETE TO BE CLASS "A", $f'_c=4,500$ P.S.I.
4. REINFORCING STEEL PROVIDED AS RE-BAR TO BE IN ACCORDANCE WITH ASTM A615, $F_y=60,000$ P.S.I./.
5. REINFORCING STEEL PROVIDED AS WELDED WIRE REINFORCEMENT (WWR) TO BE IN ACCORDANCE WITH ASTM A1064, DEFORMED WIRE WITH $F_y-MIN=70,000$ P.S.I./.
6. WELDED WIRE REINFORCEMENT SHALL BE PROVIDED IN 2 CUSTOM MATS. THE TWO CUSTOM MATS SHALL BE BENT AS REQUIRED TO REINFORCE WALLS, HEEL AND TROUGH.
7. SEE TDOT STANDARD DRAWING NOS. D-PE-24A AND D-PE-24B FOR ADDITIONAL CONSTRUCTION REQUIREMENTS.
8. BAR BENDS FOR RE-BAR SHALL BE IN ACCORDANCE WITH CRSI MANUAL OF STANDARD PRACTICE.
9. BENDS FOR WELDED WIRE FABRIC SHALL BE IN ACCORDANCE WITH THE MANUAL OF STANDARD PRACTICE AS PUBLISHED BY THE WIRE REINFORCEMENT INSTITUTE.
10. DIMENSIONAL TOLERANCES TO BE IN ACCORDANCE WITH TDOT STANDARD OPERATING PROCEDURES (SOP), SECTION 5-3, PART 3.



APPROVED

1
OF 4